

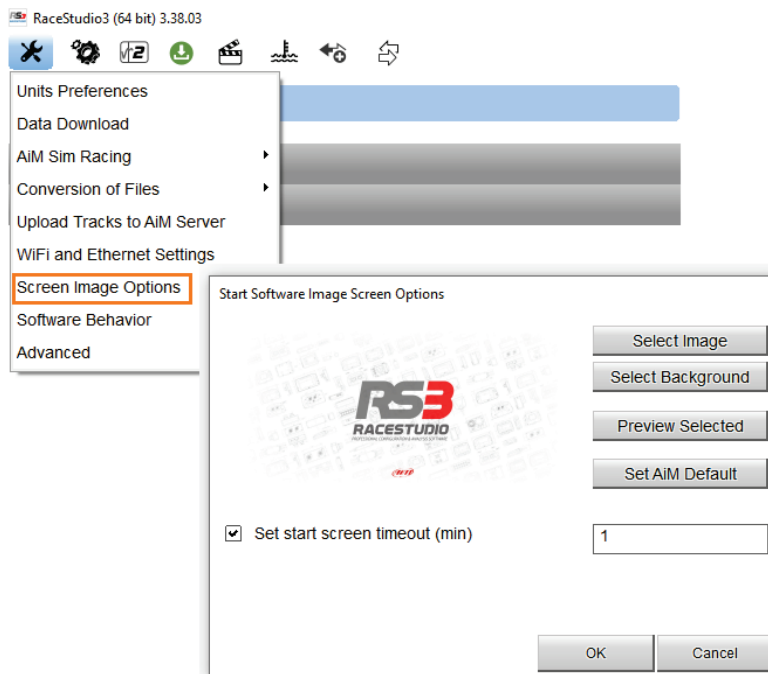
Start Page Management

Question:

How can I configure a Custom Logo on the main page of Race Studio 3 during the Start Up?

Answer:

Through the **Preferences – Screen Image Options** you can set the Start Up properties, select the desired starting Page (typically, the Team Logo), and background, in case the selected page is small.



Finally, it is possible to set a timeout, after which, without any activity, RS3 swaps to the Start Up Screen Page. This option can be useful for the teams that would like to show their logo when the PC is not in use.