

AiM InfoTech

HYUNDAI  
ELANTRA CN7 TCR  
from 2021

Release 1.01

---



ECU



# 1 Models and years

---

This document explains how to connect AiM devices to the vehicle Engine Control Unit (ECU) data stream.

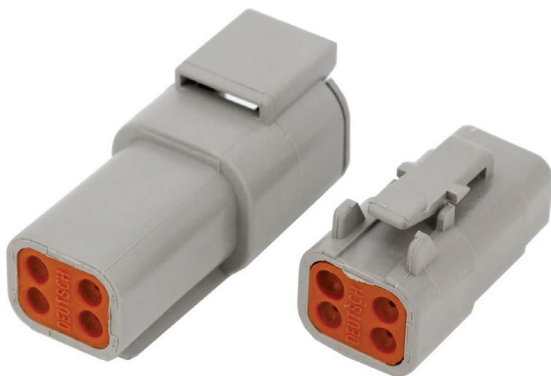
Supported models and years are:

- HYUNDAI ELANTRA (CN7) TCR from 2021

# 2 Wiring connection

---

The ECU driver developed to communicate with this vehicle, is accessible through the C-C32 Deutsch DTM04-4P connector.



Deutsch DTM04-4P Pin	Pin function	AiM cable
1	+Vb 12V	+Vb
2	GND	GND
3	CAN High	CAN +
4	CAN Low	CAN -

It is strongly recommended to refer to a skilled technician to perform this kind of installation.

Before connecting the power supply, check with the car manufacturer the current flow (Ampere) the power line can deliver.

# 3

## Race Studio configuration

---

Before connecting the AiM device to the ECU, set all functions using AiM software Race Studio. The parameters to set in the device configuration are:

- ECU manufacturer: **HYUNDAI**
- ECU Model: **ELANTRA CN7 TCR** (Only RS3)

### 4

## “HYUNDAI – ELANTRA CN7 TCR” Protocol

---

Channels received by AiM devices configured with "HYUNDAI – ELANTRA CN7 TCR" protocol are:

<b>CHANNEL NAME</b>	<b>FUNCTION</b>
RPM	RPM
Gear	Engaged gear
CarSpeed	Vehicle speed
pBrakeF	Front brake pressure
pBrakeR	Rear brake pressure
pClutch	Clutch pressure
aSteering	Steering angle
rThrottle	Throttle position
rPedal	Throttle pedal position
vFuelCons	Fuel consumption

**Technical note:** not all data channels outlined in the ECU template are validated for each manufacturer's model or variant; some of the outlined channels are model and year specific, and therefore may not be applicable.